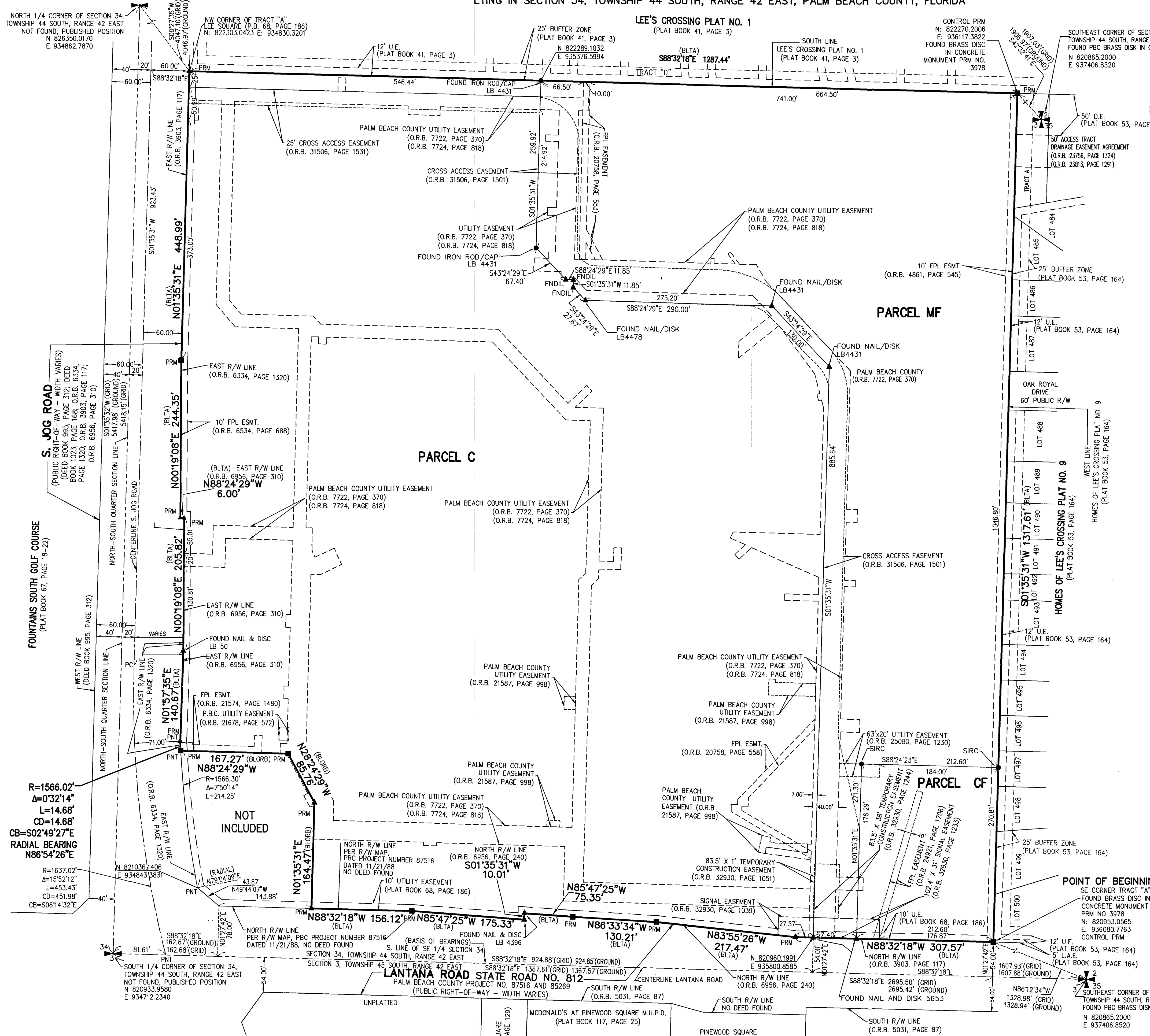


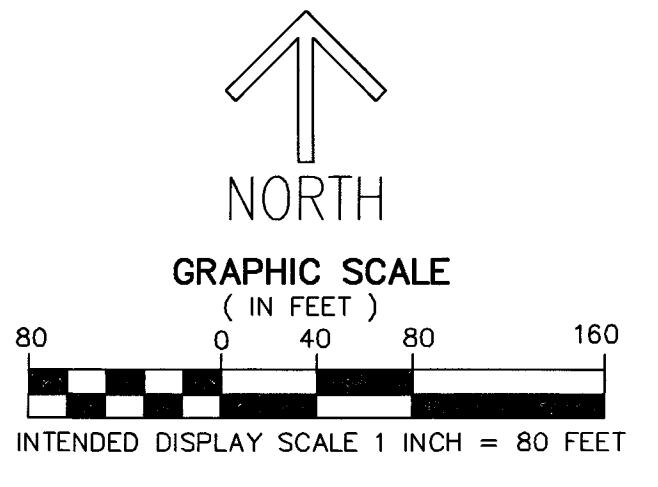
LEE SQUARE MUPD

A REPLAT OF A PORTION OF TRACT "A", LEE SQUARE, ACCORDING TO THE PLAT THEREOF, AS RECORDED IN RECORDED IN PLAT BOOK 68, PAGES 186 AND 187 OF THE PUBLIC RECORDS OF PALM BEACH COUNTY, FLORIDA, LYING IN SECTION 34, TOWNSHIP 44 SOUTH, RANGE 42 EAST, PALM BEACH COUNTY, FLORIDA



THIS INSTRUMENT PREPARED BY
DAVID P. LINDLEY
OF
CAULFIELD and WHEELER, INC.
SURVEYORS - ENGINEERS - PLANNERS
7900 GLADES ROAD, SUITE 100
BOCA RATON, FLORIDA 33434 - (561)392-1991

NOTES
COORDINATES, BEARINGS AND DISTANCES
COORDINATES SHOWN ARE GRID
DATUM = NAD 83 1990 ADJUSTMENT
ZONE = FLORIDA EAST
LINEAR UNIT = US SURVEY FEET
COORDINATE SYSTEM 1983 STATE PLANE
TRANSVERSE MERCATOR PROJECTION
ALL DISTANCES ARE GROUND, UNLESS OTHERWISE NOTED
SCALE FACTOR = 1.00031838
GROUND DISTANCE X SCALE FACTOR = GRID DISTANCE
BEARINGS AS SHOWN HEREON ARE GRID DATUM,
NAD 83 1990 ADJUSTMENT, FLORIDA EAST ZONE.



LEGEND / ABBREVIATIONS
C - CENTERLINE
Δ - DELTA (CENTRAL ANGLE)
(BLTA) - BOUNDARY LINE TRACT "A", PLAT BOOK 68, PAGE 186
(BLORB) - BOUNDARY LINE OFFICIAL RECORD BOOK 26851, PAGE 917
CB - CHORD BEARING
CD - CHORD DISTANCE
D.E. - DRAINAGE EASEMENT
E - EASTING (WHEN USED WITH COORDINATES)
E - EASEMENT
FNDIL - FOUND NAIL & DISK ILLEGIBLE
FPL - FLORIDA POWER & LIGHT COMPANY
L - ARC LENGTH
L.A.E. - LIMITED ACCESS EASEMENT
LB - LICENSED BUSINESS
N - NORTHING (WHEN USED WITH COORDINATES)
O.R.B. - OFFICIAL RECORD BOOK
MUPD OR M.U.P.D. - MULTI USE PLANNED DEVELOPMENT
PC - POINT OF CURVATURE
PNT - POINT OF NON TANGENCY
PT - POINT OF TANGENCY
R - RADIUS
R/W - RIGHT-OF-WAY
R.P.B. - ROAD PLAT BOOK
U.E. OR UE - UTILITY EASEMENT
■ PRM - DENOTES PERMANENT REFERENCE MONUMENT SET 4" x 4" x 24" CONCRETE MONUMENT WITH ALUMINUM DISK STAMPED "C&W PRM LB3591" UNLESS OTHERWISE NOTED
● SIRC - DENOTES SET 5/8" IRON ROD WITH CAP STAMPED "C&W LB3591"
▲ - DENOTES SET PERMANENT REFERENCE MONUMENT NAIL AND DISC STAMPED "PRM" LB 3591 UNLESS OTHERWISE NOTED